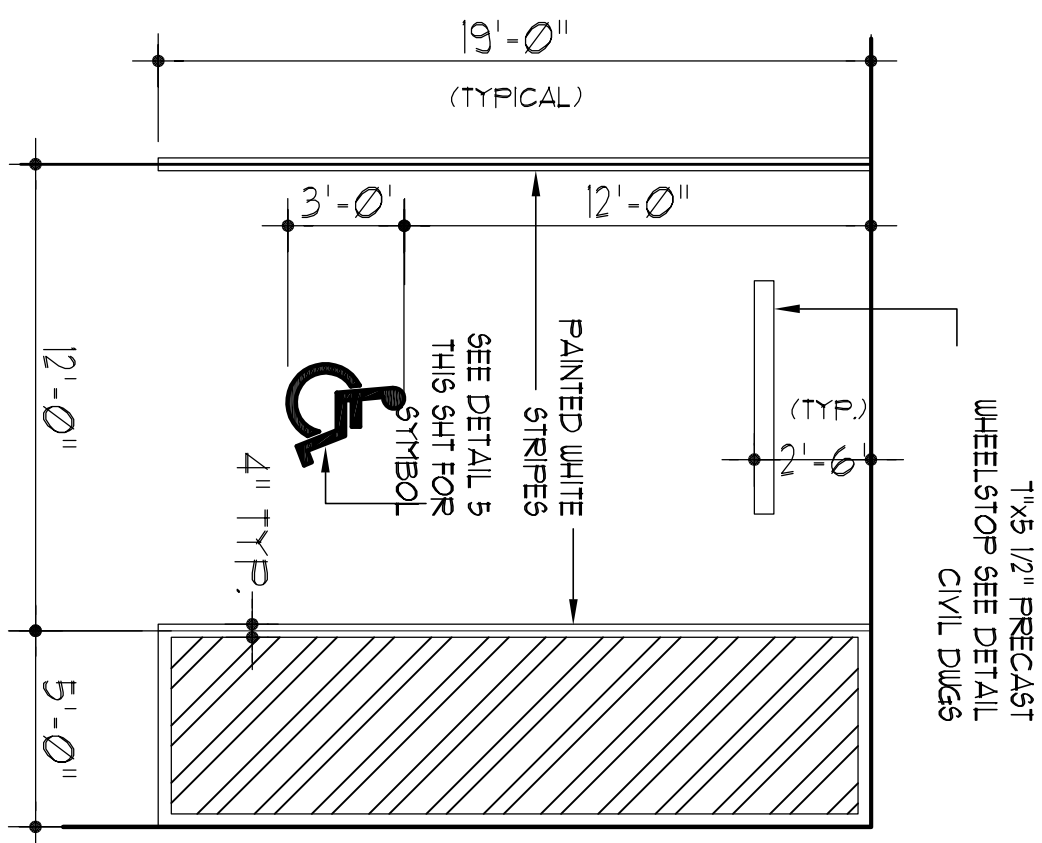
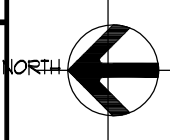
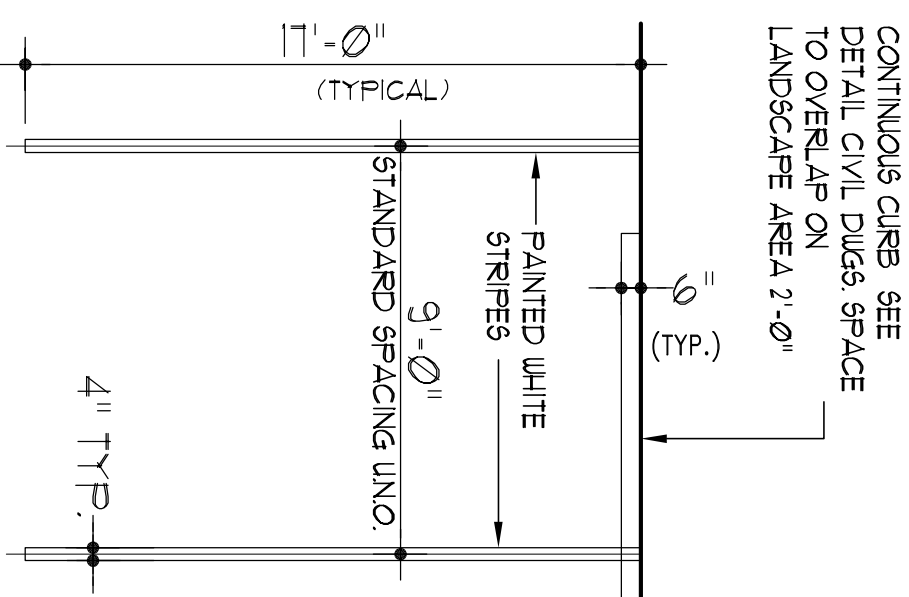


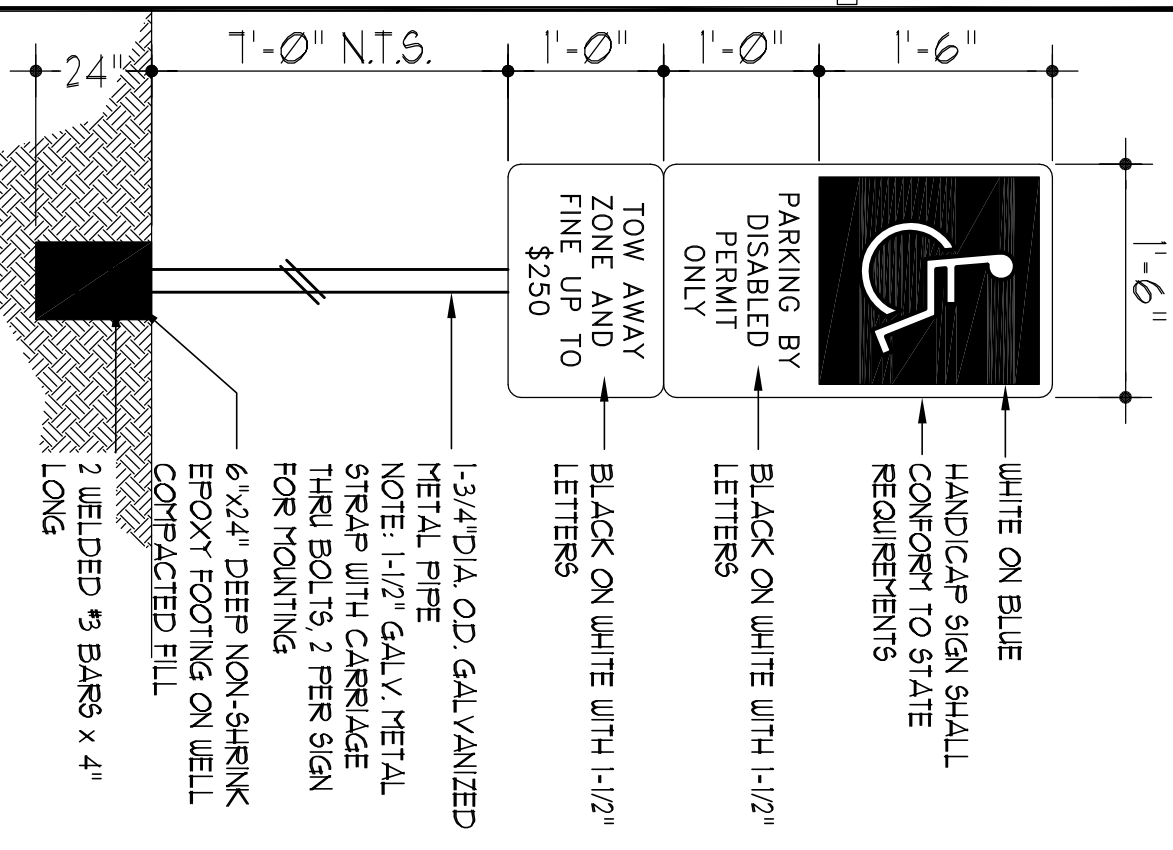
1 SITE PARKING PLAN



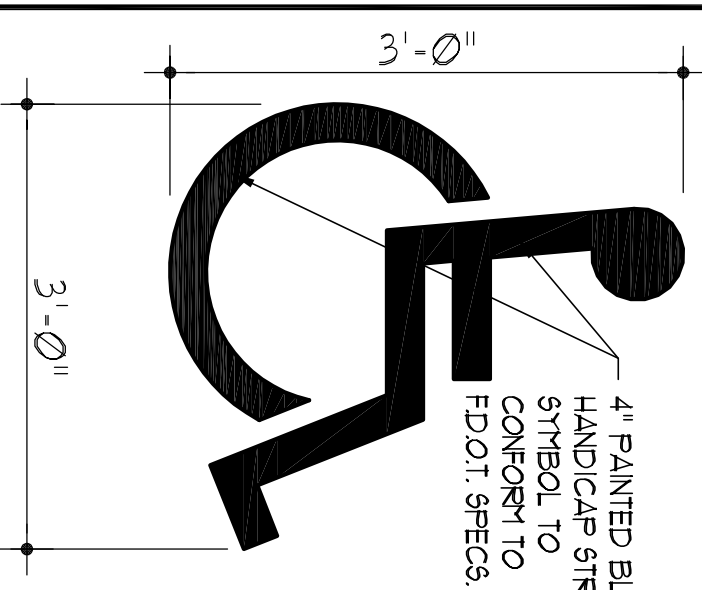
7"x5 1/2" PRECAST
WHEELSTOP SEE DETAIL
CIVIL DWG#



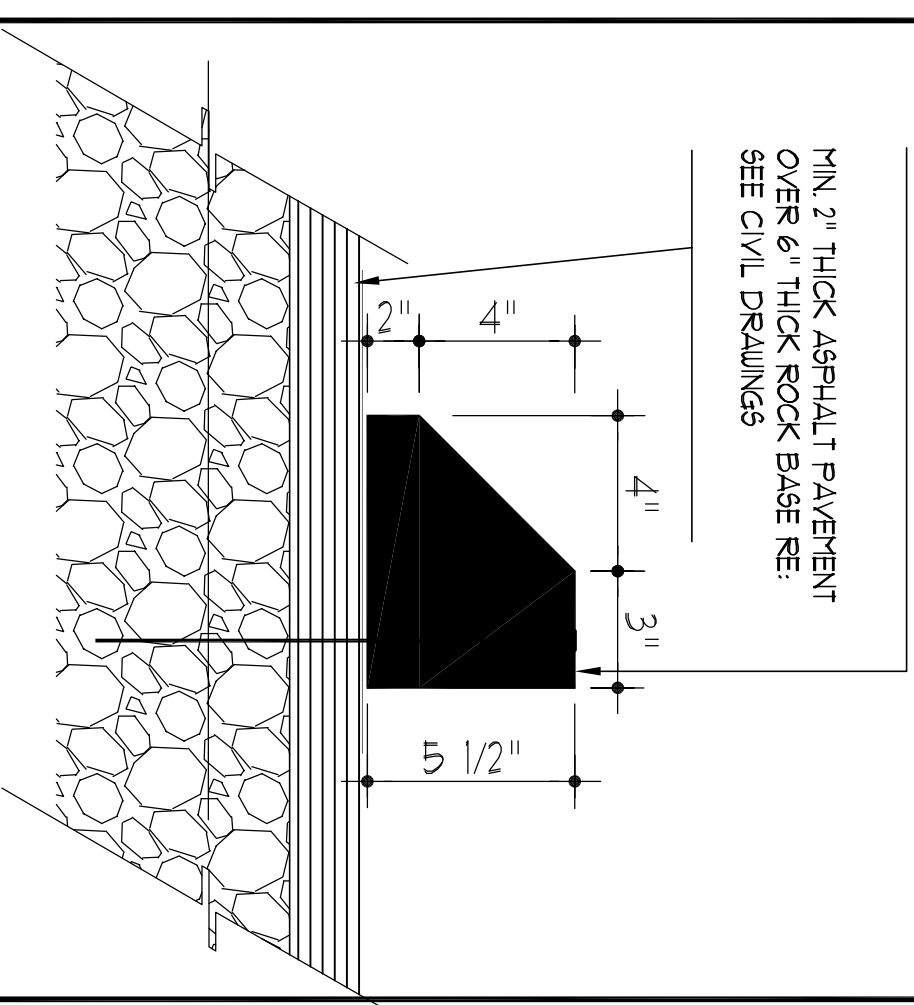
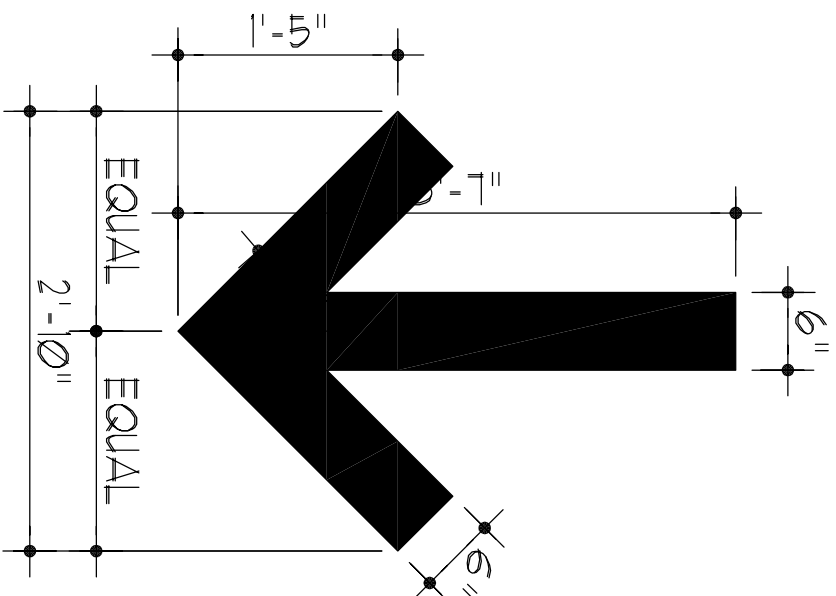
NOTE: CONTRACTOR TO PROVIDE A FINISHED HOOK UP SAMPLE OF A TYPICAL AND HANDICAP PARKING SPACE STRIPING WHEELSTOP FOR APPROVAL. ALL SIGNING AND PAVEMENT MARKINGS MUST MEET BROWARD COUNTY TRAFFIC ENG. DIVISION STANDARDS AND THE MANUAL ON UNIFORM TRAFFIC CONTROL DEVICES



NOTE: PROVIDE ONE SIGN FOR EACH HANDICAP SPACE

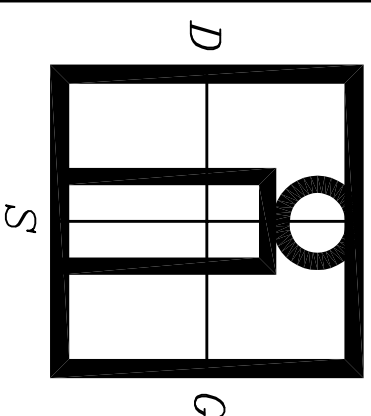
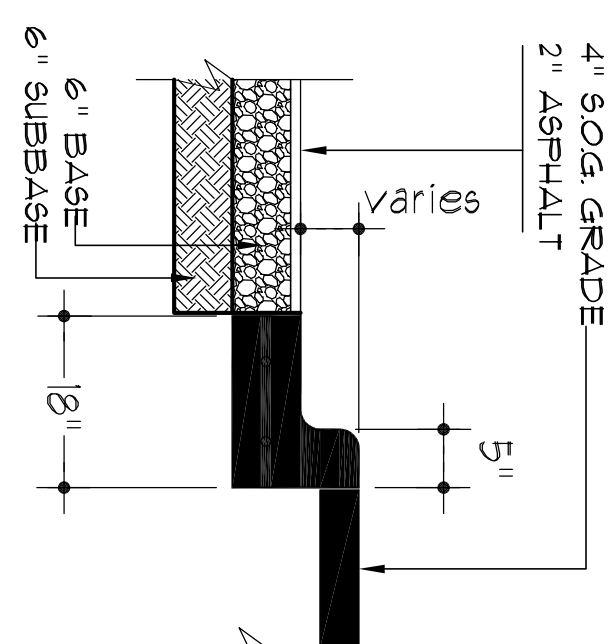


4" PAINTED BL
HANDICAP STR
SYMBOL TO
CONFORM TO
F.D.O.T. SPEC5.



CONTINUOUS 5 1/2" PRECAST
CONCRETE WHEEL STOP
REINFORCED WITH 1# AND
ANCHORED TO PAVEMENT WITH (2)
5/8" STEEL RODS x24" LONG

MIN. 2" THICK ASPHALT PAVEMENT
OVER 6" THICK ROCK BASE RE:
SEE CIVIL DRAWINGS



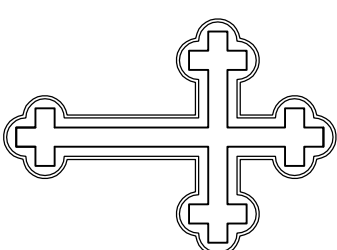
**IN-SITE
DESIGN
GROUP INC**

1609 RODMAN STREET
HOLL WOOD, FLORIDA 33020
AA26001758
954 921 5333
FAX 954 921 6769
PROJECT COORDINATOR:
ANNIE CARLUTHERS
CGC 1511058
ARCHITECT
SAMUEL R. UCCELLO

SEAL
STATE OF FLORIDA LICENSE No AR-0015997

THESE DESIGNS AND DRAWINGS ARE THE
 COPYRIGHTED PROPERTY OF N-SITE DESIGN
 GROUP, INC. AND THEY NOT BE REPRODUCED
 EXCEPT WITH SPECIFIC WRITTEN CONSENT OF
 THE COMPANY. THE CONTRACTOR MUST CHECK
 AND VERIFY ALL DIVISIONS OF THE JOB AND
 BE RESPONSIBLE FOR SAVING REPORTING ANY
 DISCREPANCIES TO THE ARCHITECT BEFORE
 COMMENCEMENT OF WORK. DRAWINGS ARE NOT
 TO BE SCALED.

NEW LIFE PENTECOSTAL
CHURCH MIRACLE
CENTER



ADDRESS:
6136 VAN BUREN STREET
HOLLYWOOD, FL

REVISIONS
JUNE-6-11
SUBMITTAL TO
TECHNICAL ADVISORY
COMMITTEE

Date Of Issue
JUNE-6-11

SITE PARKING

SP-1.3